

## **IMPROVING LIVES SELECT COMMISSION**

**Venue: Town Hall, Moorgate  
Street, ROTHERHAM.  
S60 2TH**

**Date: Tuesday, 13th March, 2018**

**Time: 5.30 p.m.**

### **A G E N D A**

**There will be a pre-briefing for all members of the Improving Lives Select Commission at 4.00 p.m.**

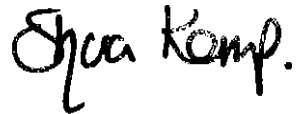
1. To consider whether the press and public should be excluded from the meeting during consideration of any part of the agenda.
2. To determine any item(s) the Chairperson is of the opinion should be considered later in the agenda as a matter of urgency.
3. Apologies for absence
4. Declarations of Interest
5. Questions from members of the public and the press
6. Communications
7. Minutes of the previous meeting held on 23rd January, 2018 (Pages 1 - 9)
8. Child and Young Person Friendly Borough 2018-2025 (Pages 10 - 29)
9. Alternative Management Arrangements for Children's Services (Pages 30 - 36)
10. Complex Abuse Processes (Pages 37 - 40)
11. Date and time of the next meeting - Tuesday 24 April, 2018 at 5.30 pm

#### **Improving Lives Select Commission membership:-**

Chair – Councillor Clark  
Vice-Chair – Councillor Cusworth

Councillors Beaumont, Brookes, Cooksey, Elliot, Fenwick-Green, Hague, Ireland, Jarvis, Khan, Marles Marriott, Pitchley, Senior, Short, Julie Turner and Tweed (18).

Co-opted members:- Ms. Jones (Voluntary Sector Consortium), Mrs. Clough (ROPF: Rotherham Older Peoples Forum) for agenda items relating to older peoples' issues.

A handwritten signature in black ink that reads "Sharon Kemp." The signature is written in a cursive, flowing style.

Sharon Kemp,  
Chief Executive.

**IMPROVING LIVES SELECT COMMISSION**  
**Tuesday, 23rd January, 2018**

Present:- Councillor Clark (in the Chair); Councillors Beaumont, Cusworth, Elliot, Fenwick-Green, Hague, Ireland, Jarvis, Khan, Marles, Pitchley and Senior.

Apologies for absence were received from Councillors Cooksey and J. Turner and from co-opted member Mrs. J. Jones.

The webcast of the Council Meeting can be viewed at:-  
<https://rotherham.public-i.tv/core/portal/home>

**107.       DECLARATIONS OF INTEREST**

Councillor Senior declared a personal interest in Minute No. 111 (Rotherham 'Voice of the Child' Lifestyle Survey 2017 – Borough-wide Report), being an employee of a charitable organisation which had participated in the Survey (although Councillor Senior herself had not participated in the work with young people). Having declared her personal interest, Councillor Senior took part in the meeting during consideration of the Lifestyle Survey item.

**108.       QUESTIONS FROM MEMBERS OF THE PUBLIC AND THE PRESS**

There were no questions from members of the public or the press.

**109.       COMMUNICATIONS**

The Select Commission discussed the following items:-

(1) Performance Monitoring of CYPS Scorecards – the Sub-Group membership would comprise Councillors Beaumont, Cusworth, Jarvis and Pitchley;

(2) Adult Learning – the membership of the Sub-Group undertaking this spotlight review during February, 2018, will be Councillors Clark and Cusworth; other Members interested in participating in this review were asked to notify the Scrutiny Officer;

(3) Members of the Improving Lives Select Commission have been invited to attend the visit to the Multi Agency Safeguarding Hub (MASH) which will be taking place on Tuesday, 6th February, 2018.

**110.       MINUTES OF THE PREVIOUS MEETING HELD ON 12TH DECEMBER, 2017**

Consideration was given to the minutes of the previous meeting of the Improving Lives Select Commission, held on 12th December, 2017 and matters arising from those minutes.

Resolved:- (1) That the minutes of the previous meeting of the Improving Lives Select Commission, held on 12th December, 2017, be approved as a correct record, for signature by the Chairman, with the inclusion of a clerical error by the addition of Councillor Pitchley to the list of Members who had given their apologies for absence for that meeting.

(2) That, with regard to Minute No. 101 (Communications), it be noted that a letter of thanks had been sent to the Barnardo's organisation, for hosting the visit of Members to the ReachOut Project on Tuesday 9th January, 2018.

(3) That, with regard to Minute No. 103 (Domestic Abuse Update), a further report be submitted to a future meeting of the Improving Lives Select Commission concerning the Domestic Abuse Strategy and delivery plan for services.

(4) That, with regard to Minute No. 103 (Domestic Abuse Update), it be noted that, on Thursday, 25th January, 2018, the Chair of the Improving Lives Select Commission is to be interviewed by representatives of the City of Bradford Metropolitan District Council as part of the Peer Review.

**111. ROTHERHAM 'VOICE OF THE CHILD' LIFESTYLE SURVEY 2017 - BOROUGH-WIDE REPORT**

Further to Minute No. 45 of the meeting of the Improving Lives Select Commission held on 1st February, 2017, consideration was given to a report, presented by the Performance Assurance Manager (Children and Young People's Services), containing the key findings from the 2017 Borough-wide Lifestyle Survey. The report stated that the Lifestyle Survey had been open to schools during the three months from May to July, 2017, with pupils of Year 7 and of Year 10 being invited to participate.

Members noted that the questions had been made more appropriate for young people, after consultation with the Council's partner organisations which will ultimately use the data obtained from the Survey. Additional questions for 2017 were about youth centres, libraries, museums and also school councils and young people's health issues (especially dental/oral health).

In 2017, only five of the sixteen secondary schools in Rotherham had not participated in the survey. There had been a total of more than 3,800 participants, being 58% of young people in the Year 7 and Year 10 school cohorts. The Newman Special School had participated in the Survey for the first time, with questions devised for pupils of that School. The intention was that all Special Schools should participate in the Lifestyle Survey 2018. In addition, pupils who receive elective home education had participated in the Survey for the first time in 2017.

Each individual secondary school, special school and pupil referral unit would be provided with its own data set extracted from the Survey results.

The lifestyle survey results provided an insight into the experiences of children and young people living in the Rotherham Borough area and provided a series of measures to monitor the progress of the development of the aims to be a child-friendly Borough. The results would also provide a series of measures to monitor the aims in the Health and Wellbeing Strategy.

The submitted report to this meeting included:-

- the 2017 Borough-wide Lifestyle Survey Report;
- the highlights of the Survey results which show areas which are showing improvement and are working well;
- the highlights of the Survey results which show areas which remain a cause for concern.

The Select Commission discussed the following salient issues about this Survey:-

The perception amongst young people of safety within the Rotherham town centre; comparisons with previous year's Survey results; Members suggested that the Survey in 2019 should include questions about safety within the refurbished Transport Interchange in the Rotherham town centre;

- the results show an increase in the number young people who are not yet feeling safe when visiting the Rotherham town centre, even though the anxiety about protests and marches has reduced;
- more young people are physically active and are eating at least five portions of fruit and vegetables each day; by contrast, the incidence of consumption of drinks with a high sugar content is a cause of concern;
- the number of children and young people having breakfast has increased; Members questioned whether some of the children and young people may prefer to have a mid-morning snack instead;
- dental and oral health and the number of young people visiting a dentist at least once per year;
- test purchasing has shown that fewer young people are able to obtain alcohol and cigarettes in shops;
- data from previous years' Surveys has provided useful information to assist in shaping the Personal, Social and Health Education (PHSE) curriculum in schools;
- the Mental Health campaign for young people has made good progress

during the past year; there are pilot schemes taking place in a number of schools;

- the sharing of information from the Survey with Schools, enabling Schools to share the Borough-wide data with parents;

- The proportion of young people seeking apprenticeships and employment, upon leaving school, instead of joining further and higher education;

- The perception amongst young people of safety within the Rotherham town centre; comparisons with previous year's Survey results; Members suggested that the Survey in 2019 should include questions about safety within the refurbished Transport Interchange in the Rotherham town centre;

- The number of young people who are carers for their relatives (although not involving baby-sitting nor accompanying a younger sibling on journeys to and from school).

Resolved:- (1) That the report be received and its contents noted.

(2) That the Improving Lives Select Commission notes that the appropriate measures from the Lifestyle Survey 2017 will be shared with the Health and Wellbeing Board and the Child Friendly Rotherham Board.

(3) That the Improving Lives Select Commission suggests that the further analysis of the outcomes of the Lifestyle Survey should include:-

- : analysis of the provision of breakfast clubs in schools;

- : the progress of the mental health pilot schemes in schools (eg: has the scheme contributed to a reduction in the incidence of bullying in schools);

- : verify the accuracy of the data collected in the Survey, with reference to and comparison with other data sources (eg: Public Health in respect of dental/oral health);

- : continue the further refining of the Survey questions, to ensure that they are appropriate for children and young people.

(Councillor Senior declared a personal interest in the above item, being an employee of a charitable organisation which had participated in the Survey (although Councillor Senior herself had not participated in the work with young people); having declared her personal interest, Councillor Senior took part in the meeting during the Select Commission's consideration of this item)

**112. CHILDREN MISSING FROM EDUCATION**

Consideration was given to a report, presented by the Service Leader, School Organisation, Admissions and Appeals describing the responsibility of the Local Authority to ensure that children missing from education (CME) are identified, reported and tracked in order that suitable educational providers may be found.

The report stated that the term CME referred to children of compulsory school age who are not on a school roll and who are not receiving a suitable alternative education, which may be approved alternative provision or appropriate Elective Home Education.

Members noted that Section 436A of the Education Act 1996 required local authorities to make arrangements to establish the identities of children residing in their area who were not receiving a suitable education. This duty did not apply to children who were registered at a school and who were not attending regularly. Instead, that issue was addressed via attendance monitoring and persistent absence work.

The Council's Early Help Service has a responsibility to ensure that protocols are adhered to when a child is known to have left Rotherham and a destination school cannot be tracked. The CME lead officer, CME officers and the Early Help Attendance lead officers have a responsibility to support schools with the identification of children missing from education.

The Early Help Service has redesigned the reporting function and developed a new CME Performance Scorecard. One of the key changes to CME reporting is to include predominant issues captured for new children identified as CME, so that a better understanding of potential vulnerability can be established, alongside a focus on the outcomes for children who have been reported as missing from education.

A copy of the performance summary (scorecard) for Rotherham-resident children missing from education, for the month of September 2017, was appended to the submitted report.

The Department for Communities and Local Government had introduced the Controlling Migration Fund enabling extra resource to assist with key issues affecting the wellbeing of children and their progression in education, such as CME. Officers financed from this Fund spend a considerable amount of their time in schools situated in the Central locality of Rotherham.

Members of the Select Commission discussed the following salient issues:-

: the school attendance data about children whose families leave during school term-time for extended holidays overseas; these cases may be

kept open for a very long time and may be Safeguarding referrals; systems are also in place to obtain information from schools, as necessary and notify the Police, airports and sea ports about such children;

: every endeavour is made to record the ethnicity profiles of children, rather than record “not known”; the children in this category very often belong to families who move into and out of the Rotherham Borough area at very short notice and the task of identifying ethnicity is usually undertaken by the officers whose resource is financed by the Controlling Migration Fund;

: the arrangements whereby pupils are removed from the roll of a school;

: the monitoring of pupils’ school attendance and absence from school and ascertaining the point at which a pupil becomes categorised as a child missing from education;

: the Early Help Service engages with children and young people who are carers at home for family relatives and may be absent from school as a consequence; such children and young people would not be categorised as children missing from education;

: the high incidence of school absence in specific areas of the Rotherham Borough;

: the recorded data about children missing from education will become more refined and detailed in future; this data would also be subject to review at quarterly intervals by the performance monitoring sub-group.

Resolved:- (1) That the report be received and its contents noted.

(2) That the Head of Service, Early Help submit a report to a meeting of the Improving Lives Select Commission in six months’ time, providing a detailed analysis of the recorded data about children missing from education and comparing such data with previous data on both a quarterly and an annual basis.

### **113. SOCIAL, EMOTIONAL AND MENTAL HEALTH (SEMH) NEEDS STRATEGY - UPDATE AND SCHOOL EXCLUSIONS**

Consideration was given to a report, presented by the Head of Inclusion, Education and Skills, stating that, during a period from 2015 to 2016, the Council had commissioned an external consultant to support the preparation of a Strategy to address Social Emotional and Mental Health (SEMH) needs in schools.

The report listed details of the existing strategy, which had now been in place for two years. Reference was made to the increase in the number of Rotherham school pupils excluded from school (both fixed-term



exclusions and permanent exclusions) during the period 2012 to 2015. After two years of the implementation and impact of the SEMH strategy, there has been a significant reduction in the number of pupils being excluded from Rotherham schools.

Members noted that a Task and Finish Group has been established to develop and prepare a new, co-produced SEMH strategy, involving representatives of the Education community, the Inclusion Service, the Early Help Service, Social Care, the Health Service and the Virtual School. The draft of this refreshed strategy is expected to be available for public consultation at the end of February, 2018, when the views of children, young people and parents will be sought.

The Select Commission's discussion of this item included the following matters:-

: the extent of financial sanctions imposed upon schools whenever a pupil is permanently excluded and whether the school should fund the cost of the alternative educational provision which the pupil(s) will receive;

: pupils at risk of exclusion from school, for whom attendance on a part-time basis may be limited to one hour per week at school; children of statutory school-age have the entitlement to 25 hours of education per week; there should be the continuous monitoring and recording of details of pupils who have a part-time timetable at school; the part-time timetable should have clear objectives with the aim of returning the pupil to full-time education as soon as possible;

: arrangements may sometimes be put in place, by schools in partnership, for individual pupils at risk of exclusion from school (thus avoiding the need for a pupil to join a pupil referral unit); examples were : short-term visits to other schools; temporary placements for several weeks on a different school campus; the formal managed move and eventual permanent transfer to a different school; these arrangements were established in a protocol agreed between the Local Authority, schools and academies; pupils who are out of school may also be considered by the Local Authority's Fair Access panel;

: the Local Authority monitors children and young people who are educated otherwise than at school and maintains close relations with the children and young people and their families; their views will also be sought on the revised SEMH strategy.

Resolved:- (1) That the report be received and its contents noted.

(2) That the Improving Lives Select Commission:-

(a) notes the positive direction of travel with regard to both the permanent and fixed-term exclusion of pupils from school;

(b) notes and supports the plan for a joint Social, Emotional and Mental Health strategy across Education, Health and Social Care;

(c) supports the suggested timeline, as now reported, for the development of a revised Social, Emotional and Mental Health strategy.

(3) That a report describing the progress of the development of the new Social, Emotional and Mental Health strategy be submitted to a meeting of the Improving Lives Select Commission during September, 2018 and such report shall include the views of children, young people and parents on the development of the strategy.

#### **114. LOOKED AFTER CHILDREN SUFFICIENCY STRATEGY - UPDATE**

Further to Minute No. 47 of the meeting of the Improving Lives Select Commission held on 1st February, 2017, consideration was given to a report, presented by the Head of Service, Looked After Children, providing an update of progress and development in the planned three years' cycle of the Looked After Children Sufficiency Strategy 2017 to 2021. The report also identified where further work was still required in order to achieve the agreed objectives of this Strategy.

The Select Commission noted that during November, 2017, the Office for Standards in Education (Ofsted) had completed a re-inspection of this Council's services for children in need of help and protection, children looked after and care leavers and the final report of that re-inspection was due to be published on 29<sup>th</sup> January, 2018.

During discussion, Members raised the following salient issues:-

: ensuring the stability of placements, so that Looked After Children are not moved frequently from one placement to another;

: the initial health assessments of looked after children, involve a variety agencies;

: the good work and progress of the care leaving team and the good relations between the team and the young people who are the care leavers;

: the adoptions of older children (rather than babies); 55% of the children who are ready for adoption are in the hard-to-place category; every endeavour is made to find an appropriate, permanent adoption placement for children; the longest wait had been 1,600 days to place a child with a disability in adoption;

: sibling groups are able to remain together in the same placement, as often as possible; if there has to be separation, the children will be reunited at earliest opportunity; in addition, in cases of siblings being separated, the foster carers are expected to ensure that there is regular

contact with the siblings;

: the availability and support for of mother-and-baby placements and also of placements for older children and adolescents;

: adoption placements for children from Black and Minority Ethnic (BME) backgrounds; this Authority is a pilot area for a scheme to recruit more foster carers and adoptive parents for children from BME backgrounds; there is a regular dialogue with the Council of Mosques in order to try and recruit foster carers and adoptive parents who have a Muslim background;

: development of a pre-apprenticeship scheme for Looked After Children who seek apprenticeships with the Local Authority, enabling them to be able to prepare correctly for joining an apprenticeship scheme;

: the increase in the number of Looked After Children both in Rotherham and throughout the United Kingdom; every endeavour is being made to try and minimise the number of children being taken into care; consideration is also given to returning looked after children to their family home whenever possible;

: increased use of the Edge of Care system to help reduce the numbers of Looked After Children;

: there is confidence that there are fewer children being looked after by the Local Authority than would otherwise have been case without the implementation of the Sufficiency Strategy;

: the transition planning for support from Adult Social Care now begins when the young person is at an earlier age (currently 15 years' old).

Members were encouraged to attend the seminar about the recruitment of foster carers, which would take place on Tuesday, 6th February, 2018, at the Town Hall, Rotherham.

Resolved:- (1) That the report be received and its contents noted.

(2) That a report about the Edge of Care system be submitted to the meeting of the Improving Lives Select Commission to be held on Tuesday, 24h April, 2018.

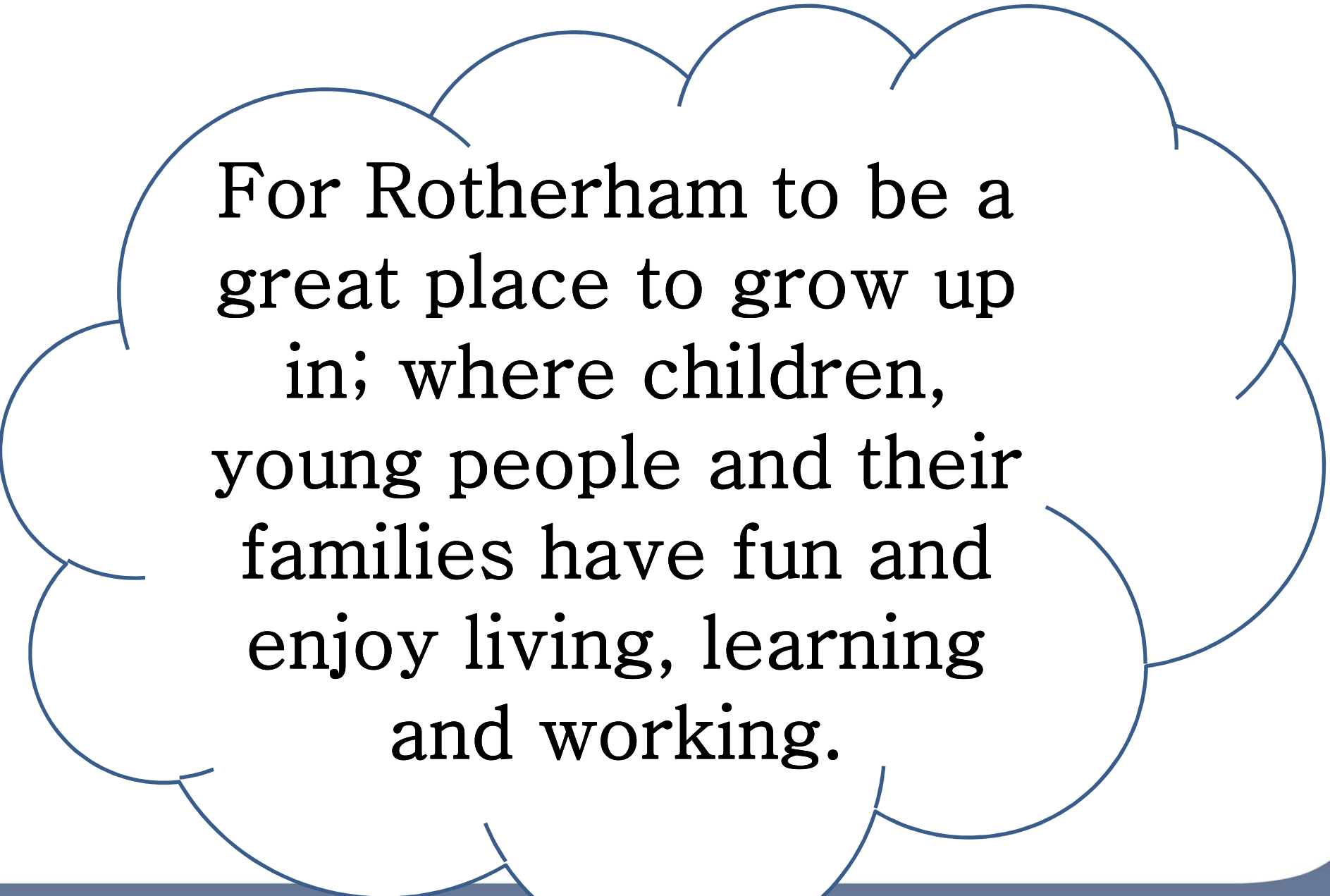
## **115. DATE AND TIME OF NEXT MEETING**

Resolved:- That the next meeting of the Improving Lives Select Commission take place at the Town Hall, Rotherham on Tuesday, 13th March, 2018, commencing at 5.30 p.m.

# Child Friendly Rotherham

Improving Lives Select Commission  
13<sup>th</sup> March 2018

Shokat Lal, Assistant Chief Executive



For Rotherham to be a  
great place to grow up  
in; where children,  
young people and their  
families have fun and  
enjoy living, learning  
and working.

# Why are we doing this?

- Ambition to become a child friendly borough – result of CSE report and Council's Fresh Start Improvement Plan
- The Council wanting to improve the borough for all children and young people – not just focusing on 'children's services'

# Our approach

- Established a local Child Friendly Board; providing governance and help steer the work, this ensured:
- Local leaders were engaged: elected members, chief executives and senior managers
- Partners were engaged who already work with children and young people:
  - voluntary and community sector
  - health, police and education

# Our approach

- Children and young people engaged from the start



- Ensured it wasn't 'adult-led' but children and young people had their voices heard and acted on
- Feeding this into everything we do in the council
- Influencing other partners



# Who we spoke to

- We spoke to around 4000 children and young people using a range of methodologies:
  - Attending meetings (youth cabinet/Youth Parliament)
  - Events and activities led by young people
  - Embassy for Reimagining Rotherham consultation and manifesto
  - Online survey
  - Lifestyle survey for schools
  - Rotherham Show

# What children, young people and their families told us...

**Children and young people feel positive and proud of where they live**

**Enjoy opportunities to be with friends and family and celebrate their cultural diversity**

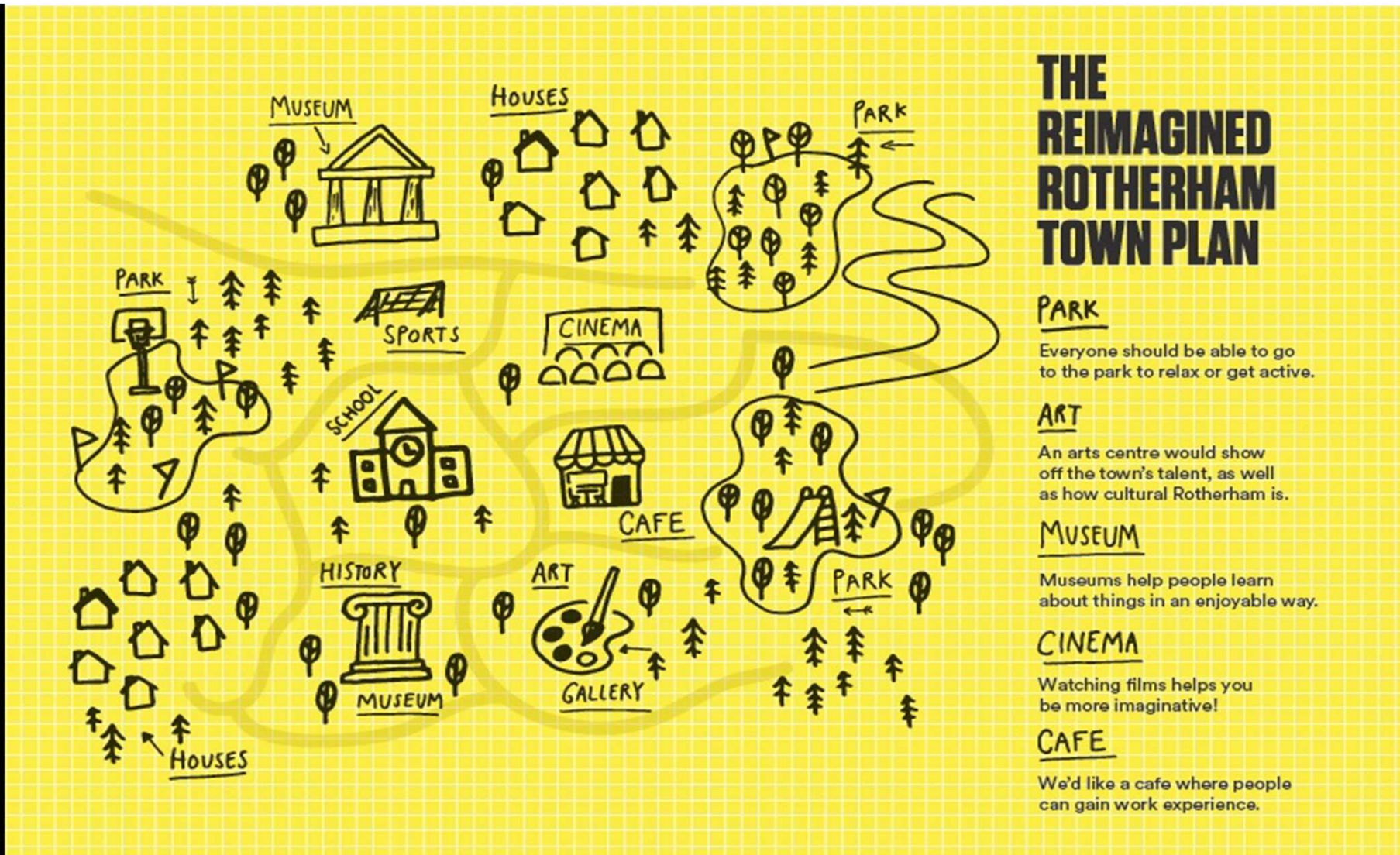
**Enjoy what was on offer - just wanted to have a bit more "fun"!**

**Adults much more likely to be negative, critical and concerned about diversity and lack of things to do...**





# Reimagining Rotherham Project...





# Bringing together 'thinkers' and 'actors'







# 4 Themes for 'Child Friendly Rotherham'...

Analysis of all consultation and CF Board workshop highlighted 4 themes:

- a vibrant borough with age-appropriate, fun things to do
- places in Rotherham to be safe, clean and welcoming
- All children and young people have a voice and are listened to
- opportunities to bring together and celebrate Rotherham's diverse communities

# ‘Our Rotherham’: achieving the ambition to be a child and young person friendly borough 2018–2025

- Using consultation responses and event the board and young people co-produced an action plan
- Plan for 2018 – 2025 in line with other key strategies and plans
- CF Board identified champions for each theme



# ‘Child Friendly Rotherham’ already in action...

- Young people influencing town centre masterplan
- Influenced ambition to be Children’s Capital of Culture 2025
- Influencing policy and strategic agendas e.g. Safer Rotherham Partnership and Building Stronger Communities Forum
- Continuing to work with the Different but Equal Board and Grimm & Co as key partners
- Community journalist project and ‘Our Rotherham’ website <https://www.ourrotherham.com>
- Programme of workshops/events being developed throughout the year

# What next...

- Continue to use this initiative to influence everything we do; always asking “what is the impact on children and young people?”
- Ensure co-production and meaningful engagement is the norm
- Not just focusing on what children and young people want, but using their influence to make Rotherham great for all ages!
- Where can you contribute to the agenda...?

# Thank you!

## ‘Our Rotherham’ achieving the ambition to be a child and young person friendly borough 2018-2025

### Action Plan

The aim of the Child Friendly Board is: For Rotherham to be a great place to grow up in, where children, young people and their families have fun and enjoy living, learning and working.

This plan has been produced by the Child Friendly Rotherham Board with children and young people across Rotherham.

**Voice and influence** is a cross-cutting theme running through the plan. Each of the three themes below considers how the voices of children and young people feed into the activities and influence everything we do as partner organisations.

Themes and activities	Who will do it	By when	RAG
<b>Cross-cutting theme - all children and young people have a voice and are listened to</b> “If it’s about us, don’t do it without us!” Children and young people want to be listened to, and have their voices heard when organisations develop plans, projects and services. They want to have the power to change things through co-production and promote a culture of open and clear communication so they know how they have influenced that change and why.			
<b>Board champion: Teresa Brocklehurst, Voice and Influence Partnership</b> <b>The activities, projects and initiatives that will help make this happen...</b> Each of the three themes in this plan includes a ‘voice and influence’ element within it, there will also be a number of specific activities to support this outlined below.			
Extend the community journalist ‘Our Rotherham’ project delivered by Defeye Creative to a wider group of young people across the borough, using the project to explore a range of views from children, young people and adults on key agendas (to be determined by the young people).	Defeye Creative (Kate Green as RMBC contact)	August 2018	A
Developing a social media platform (e.g. Facebook) to host the films produced by the ‘Our Rotherham’ community journalist project.	Defeye Creative / Emma Hollingworth / Kate Green	August 2018	A
Young people’s awards ceremony – delivered by the Different but Equal Board to celebrate the achievements of young people across Rotherham	Teresa Brocklehurst, Voice and Influence Partnership	23 February 2018	G

## Theme 1 a vibrant borough with age-appropriate, fun things to do

Children and young people in Rotherham said they want to live in a place where all people enjoy, with activities that are interesting, educational, fun and colourful. They want a great town centre, where they can spend time with their families, meet friends and be entertained, and have opportunities across the whole borough for getting involved in arts and cultural activities.

### Board champion: Cllr Atkin

#### The activities, projects and initiatives that will help make this happen...

<p>The Reimagining Rotherham project developed a 'blueprint' for an ambitious future for Rotherham which has culture, leisure and green spaces at its heart. Young people say that Rotherham should have: a children's gallery, science museum, cinema, festivities, arts centre, communal garden, outdoor pursuits.</p> <p>In response to this, Rotherham has an ambition to become the first Children's Capital of Culture 2025. This will be achieved through a co-created, 7 year plan to deliver young people's ambitions for Rotherham's future.</p>	<p>Polly Hamilton, RMBC Strategic Director Culture and Leisure</p> <p>Working with Teresa Brocklehurst, Voice and Influence, the Different but Equal Board and young ambassadors at Grimm &amp; Co.</p>	<p>2025</p> <p>With key milestones to be identified for the 7 year period (TBC)</p>	<p>A</p>
<p>The local 'town centre masterplan' which is being used to redevelop Rotherham's town centre includes some of the other elements that children and young people want locally – including spaces to meet friends, family and socialise, entertainment places including a cinema, restaurants and an arts centre, and spaces for creativity.</p>	<p>Dan Watson TBC</p>	<p>TBC</p>	<p>A</p>
<p>Rotherham University Campus – providing opportunities for Rotherham's young people to continue their education in Rotherham.</p>	<p>Jason Austin, RNN Group</p>	<p>Autumn 2018</p>	<p>A</p>

## Theme 2 all places in Rotherham to be safe, clean and welcoming

Children and young people want the borough to be brighter, cleaner and to feel safer for everyone who lives or visits it. They believe that places which are clean, well looked after and welcoming results in more people wanting to visit and more families wanting to live and bring their children up, which in turn creates safer environments which all people feel proud of.

### Board champion: Cllr Jeanette Mallinder

#### The activities, projects and initiatives that will help make this happen...

<p>The views from the Child Friendly Rotherham consultation will inform the priority setting for the Safer Rotherham Partnership Board for 2018/19.</p>	<p>Carol Adamson, RMBC Community Engagement Officer</p>	<p>5 March 2018</p>	<p>A</p>
---	---	---------------------	----------

The 'building confident and cohesive communities' theme board of the Safer Rotherham Partnership want to engage with young people and ask them to help set their priorities for the year 2018/19. To do this a workshop will take place with young people invited from various groups across Rotherham to look at what the most important things are for them.	Bev Pepperdine, RMBC Performance Assurance Officer & Carol Adamson, RMBC Community Engagement Officer	16 February 2018	G
The Improving Places Select Commission to host a session during the Easter holidays with children and young people across the borough and members of the Child Friendly Board. To look at what specific areas of work could be developed with the support of scrutiny members.	Cllr Mallinder	TBC - Week commencing 2 <sup>nd</sup> April	R
Opportunities will be explored where children and young people can be better engaged in and inform campaigns and initiatives such as 'Love Where you live' and the 'Thriving Neighbourhood' work.	Cllr Mallinder & lead officer TBC	On-going	R
<b>Theme 3 bring together and celebrate Rotherham's diverse communities</b> Children and young people in Rotherham are proud of where they live, are proud of its cultural diversity and feel strongly that people of all ages, backgrounds and cultures should come together and be celebrated. They want to promote what is good about Rotherham - the people and its communities – and use activities such as festivals, intergenerational projects and communal spaces to bring people together.			
<b>Board champion: Shokat Lal, Assistant Chief Executive</b>			
<b>The activities, projects and initiatives that will help make this happen...</b>			
BSBT (Building a Stronger Britain Together) – Counter-Extremism funding for VCS projects: A number of bids being put forward for funding of specific projects in Rotherham, some of which will involve children and young people. Explore this further in terms of potential and links to 'child friendly Rotherham' if bids are successful.  Explore the possibility of working with a VCS organisation to put an application forward to a future round of the BSBT funding (above) to develop a project around empowering young people to reject extremism.	Ian Stubbs, RMBC Community Engagement Coordinator	March 2018  When funding available	A
Explore opportunities available through the BSBT in-kind support offer to develop communications tools aligned to young people and positive messages linked to the Different but Equal Board.	Ian Stubbs, RMBC Community Engagement Coordinator & Teresa Brocklehurst, Voice and Influence Partnership	April 2018	A
Number of projects delivered as part of the Controlling Migration Fund, ensure these consider their impact on children and young people, and where they can be better engaged in activity	Mahara Haque, RMBC Stronger Communities	On-going	A

and help co-design local projects.	Coordinator (Building Stronger Communities Forum)		
Different but Equal Board theme for 2018 is culture and diversity; explore opportunities with them as part of this theme. Support where appropriate the DbE annual event in summer around this theme.	Teresa Brocklehurst, Voice and Influence Partnership	Summer 2018	A
Number of events throughout the year which engage children and young people, including: <ul style="list-style-type: none"> <li>Holocaust Memorial Day (inc. the Anne Frank exhibition)</li> <li>TBC</li> </ul>	January 2018 TBC		
<b>Underpinning actions</b>			
Programme of themed board meetings and/or workshops throughout the year, involving children and young people – all TBC:			
16 <sup>th</sup> February – theme 2. Safer Rotherham Partnership workshop	Bev Pepperdine/Kate Green/Carol Adamson	16 <sup>th</sup> February 2018	G
During Easter holidays TBC – theme 2. Safe, clean and welcoming. Session with Improving Places Select Commission, the Child Friendly Board and children and young people to explore what specific activities could be delivered.	Cllr Mallinder (Improving Places Select Commission)	Week commencing 2 <sup>nd</sup> April	R
During summer holidays TBC – theme 3. Cultural and diversity (Different But Equal Board event)	Teresa Brocklehurst , Voice and Influence Partnership	From 24 <sup>th</sup> July 2018	R
During Autumn holidays TBC – theme 1. things to do	Cllr Atkin	Week commencing 29 <sup>th</sup> October 2018	R
Evaluation of the 'Child Friendly Rotherham' initiative to date (2017-18) – with support of Co:Create and Sheffield University.	Kate Green / Morwenna Foden, Co:Create	December 2018	R

---

## Summary Sheet

### Committee Name and Date of Committee Meeting

**Improving Lives Select Commission – 13 March 2018** (Council 28 February 2018)

### Report Title

Response to Recommendations from Improving Lives Select Commission –  
Alternative Management Arrangements for Children and Young People's Services in  
Rotherham

### Is this a Key Decision and has it been included on the Forward Plan?

Yes

### Strategic Director Approving Submission of the Report

Ian Thomas, Strategic Director of Children and Young People's Services

### Report Author(s)

Ian Thomas, Strategic Director of Children and Young People's Services  
01709 334162 or [ian.thomas@rotherham.gov.uk](mailto:ian.thomas@rotherham.gov.uk)

### Ward(s) Affected

All

### Summary

The Improving Places Lives Commission established a Task and Finish Group to consider the lessons learnt from other trust models and also look objectively at other alternative management arrangements which might secure the long-term success of Rotherham's Children and Young People's Services. The group completed its review in the autumn of 2017 and submitted a final report to Council on 18 October 2017.

Under the Overview and Scrutiny Procedure Rules, the Cabinet is required to respond to any recommendations made by scrutiny. Cabinet considered and agreed the response enclosed at Appendix A at its meeting on 19 February 2018. This report is submitted to ensure that all Members are aware of the implementation of recommendations from the review.

### Recommendations

1. That Council note the response to the scrutiny review of Alternative Management Arrangements for Children and Young People's Services in Rotherham set out at Appendix A to this report.
2. That the response be referred to the next meeting of the Improving Lives Select Commission on 13 March 2018.



**List of Appendices Included**

Appendix A - Cabinet's Response to Scrutiny Review of Alternative Management Arrangements for Children and Young People's Services in Rotherham

**Background Papers**

Report of the Improving Lives Select Commission – Scrutiny Review of Alternative Management Arrangements for Children and Young People's Services in Rotherham

**Consideration by any other Council Committee, Scrutiny or Advisory Panel**

Cabinet and Commissioners' Decision Making Meeting – 19 February 2018  
Improving Lives Select Commission – 13 March 2018

**Council Approval Required**

No

**Exempt from the Press and Public**

No

## **Response to Recommendations from Improving Lives Select Commission – Alternative Management Arrangements for Children and Young People’s Services in Rotherham**

### **1. Recommendations**

- 1.1 That Council note the response to the scrutiny review of Alternative Management Arrangements for Children and Young People’s Services in Rotherham set out at Appendix A to this report.
- 1.2 That the response be referred to the next meeting of the Improving Lives Select Commission on 13 March 2018.

### **2. Background**

- 2.1 The review report presented the latest analysis and current thinking of the Improving Lives Select Commission on the range of Alternative Management Arrangements (AMAs) for children’s services. It evaluated the relative strengths and challenges of the primary options available to the Council. The paper then provided initial recommendations for future management arrangements.
- 2.2 Members of the Select Commission were asked by the Commissioners to consider the lessons learnt from other trust models and look objectively at other AMAs which might secure the long-term success of Rotherham’s Children and Young People’s Services. The supporting evidence underpinning the report was gathered through visits and conversations with other areas to identify the impact their delivery arrangements had on improvements. In addition, Isos Partnership (with the support of the Local Government Association) used an independent research methodology to enable an objective assessment of the model/s most likely to secure sustainable improvements in Children and Young People’s Services.
- 2.3 The review report was submitted to Council on 18 October 2017, which represented the formal publication of the report. Under the Overview and Scrutiny Procedure Rules, the Cabinet is required to respond to any recommendations made by scrutiny and on 19 February 2018 the response and actions for the implementation of recommendations were agreed.
- 2.4 This report is submitted to ensure that all Members are aware of the implementation of the recommendations from the scrutiny review.

### **3. Key Issues**

- 3.1 There are five broad recommendations arising from the scrutiny review of Alternative Management Arrangements for Children and Young People’s Services, which are detailed in Appendix A. The schedule provides detail in respect of whether the recommendations are agreed, not agreed or deferred. Where recommendations are agreed, the schedule details what action will be taken, by when and who will be responsible.

#### **4. Options considered and recommended proposal**

- 4.1 The proposed response of the Cabinet to the recommendations is set out in Appendix A.

#### **5. Consultation**

- 5.1 The Improving Lives Select Commission consulted with a wide range of organisations across local government and the social care sector as part of the review. The Commissioner for Children's Social Care and Cabinet Member for Children and Young People's Services were also consulted in the preparation of the report from the Select Commission.

#### **6. Timetable and Accountability for Implementing this Decision**

- 6.1 The formal Cabinet response will be agreed at the Cabinet and Commissioners' Decision Making Meeting on 19 February 2018. Following this, the formal response will be submitted to the Improving Lives Select Commission. It will be a matter for the Members of the Select Commission to determine what ongoing monitoring and review of the agreed actions will be required.

#### **7. Financial and Procurement Implications**

- 7.1 Whilst there may be significant financial implications that would require careful consideration should there be a future decision on the move to alternative management arrangements, these are difficult to quantify at this time. However the preferred model would avoid high transition and operating costs associated with each of the options whilst securing more rapid and sustainable improvement.

#### **8. Legal Implications**

- 8.1 There are no direct legal implications from the recommendations contained in this report. There would be significant legal implications that would require careful consideration should there be a future decision on the adoption of alternative management arrangements.

#### **9. Human Resources Implications**

- 9.1 There are no direct HR implications arising from this report.

#### **10. Implications for Children and Young People and Vulnerable Adults**

- 10.1 The quality of services provided to children and young people can be impacted on by a range of factors. At the current time there is no evidence to suggest that one organisational model is better than the others at improving and sustaining the improvements in the quality of services. The response schedule (Appendix 1) indicates that the Council will continue to make use of the regional peer review programme and other quality assurance processes to continue to improve the quality of services to Children and Families.

## 11. Equalities and Human Rights Implications

11.1 There are no direct equalities or human rights implications arising from this report.

## 12. Implications for Partners and Other Directorates

12.1 There are no implications for partners or other directorates arising from the response to the recommendations.

## 13. Risks and Mitigation

13.1 No risks have been identified.

## 14. Accountable Officer(s)

Ian Thomas, Strategic Director of Children and Young People's Services

Approvals obtained on behalf of:-

	Named Officer	Date
Strategic Director of Finance & Customer Services	Michael Wildman	01.02.2018
Assistant Director of Legal Services	Neil Concannon	01.02.2018
Head of Procurement (if appropriate)	N/A	
Head of Human Resources (if appropriate)	N/A	

*Report Author: Ian Thomas, Strategic Director of Children and Young People's Services  
01709 334162 or [ian.thomas@rotherham.gov.uk](mailto:ian.thomas@rotherham.gov.uk)*

This report is published on the Council's website or can be found at:-  
<http://moderngov.rotherham.gov.uk/ieDocHome.aspx?Categories=>

## ***Cabinet's Response to Scrutiny Review of Alternative Management Arrangements for Children and Young People's Services in Rotherham***

<b>Recommendation</b>	<b>Cabinet Decision</b> <i>(Accepted/ Rejected/ Deferred)</i>	<b>Cabinet Response</b> <i>(detailing proposed action if accepted, rationale for rejection, and why and when issue will be reconsidered if deferred)</i>	<b>Officer Responsible</b>	<b>Action by (Date)</b>
1. A Practice Partner model would secure the most rapid and sustainable improvements in the short term (two years) and present the lowest risk to the Improvement journey.		We agree that a PiP model has made a significant contribution to the first stage of the improvement journey, however a self-improving culture will be required to get from Good to Outstanding.	Ian Thomas	
2. The Practice Partner model will: <ul style="list-style-type: none"> <li>Establish the right balance of political ownership, oversight and accountability for CYPS at the same time as rigorous external challenge;</li> <li>Enable the good progress being made on the Improvement programme to continue at an accelerated pace with minimal disruption to partners, wider council priorities or management focus; and</li> <li>Avoid high transition and operating costs associated with each of the AMAs.</li> </ul>		We agree for the first stage of the improvement journey from Inadequate to Good.	N.F.A required	
3. The Council will continue to work effectively with our Peer Practice Partner, and once assessed as "Requiring Improvement", we would want to continue with Lincolnshire as a partner in practice given their knowledge and understanding of Rotherham.		No longer relevant given the recent 'Good' rating achieved, however the Council will continue to participate in the Regional Review model.	Ian Thomas	Annual Participation

4. Once there is consistent front line practice, the Council will actively consider other options to work with others knowing that integration, collaboration or further commissioning will be underpinned by strong and robust operational activity and management oversight.		The Department has achieved a Good rating however improvement is a continuous process and the Council will commit to participate in the development of other service models that will enhance Social Worker practice and outcomes.	Ian Thomas	
5. Whilst continuing with the Practice Partner is the preferred option based on the information, evidence and research available today, this is not a closed decision. The Council remains open to other Alternative Management Arrangements such as establishing a Trust/CIC, including the potential to integrate with another Children's Trust who is rated as "Good", if there is evidence in the future that this would secure more rapid and sustainable improvement.		The Department has achieved a Good rating and is committed to participating in the Regional Peer Review Process to support continuous Improvement.	Ian Thomas	

**Council Report**

Improving Lives Select Commission

**Title**

Complex Abuse Processes

**Is this a Key Decision and has it been included on the Forward Plan?** No

**Strategic Director Approving Submission of the Report**

Ian Thomas, Children and Young People's Services

**Report Author(s)**

Vicky Schofield – Head of Service First Response

**Ward(s) Affected** All

**Summary**

1. Complex abuse procedures are used in cases where there are believed to be issues of connected, organised or multiple abuse of children. This is a multi-agency procedure in place under the Rotherham Safeguarding Children Board.
2. There is a currently large scale Complex Abuse Inquiry ongoing in Rotherham Borough which commenced during early 2017.
3. This report sets out information generally about the ways of working with connected or organised abuse and a brief summary of the scope and nature of the current Rotherham Inquiry.

**Recommendations**

- 2.1 Note the contents of the report.

**List of Appendices Included** None

**Background Papers** None

**Consideration by any other Council Committee, Scrutiny or Advisory Panel**  
None

**Council Approval Required** No

**Exempt from the Press and Public** No

**Title:** Complex Abuse Processes

**1. Recommendations**

- 1.1 Note the contents of the report.

**2. Background**

- 2.1 Complex abuse procedures are used in cases where there are believed to be issues of connected, organised or multiple abuse of children. This may occur where multiple children (across more than one sibling group) are abused by a single perpetrator or when multiple, connected perpetrators are involved in abusing children in some “organised” way. Complex abuse investigations are governed by the same legislative principals as all other investigations of child abuse (section 47, Children Act 1989 and Working Together to Safeguard Children 2015). The local authority therefore has a statutory duty to investigate where there are reasonable grounds to believe that children are suffering or likely to suffer significant harm, taking all necessary action to ensure their welfare as a result.

There is a multi-agency procedure in place under the Rotherham Safeguarding Children Board relating Complex Abuse. The procedure sets out a way of working to ensure a multi-agency approach to the identification, planning and investigation around this type of abuse, including putting in place operating arrangements such that abuse is understood and safety for the affected children is achieved.

The ways of working in cases of connected or organised abuse are typically more difficult to establish, given the need for staff involved to have a broad understanding about the whole network / range of evidence available, rather than focussing specifically on individual children and their families. In such cases, the challenges are around ensuring the whole investigation is co-ordinated, that information is correctly shared and understood by those involved. Often, given that connect abuse cases often involve a higher volume of more complex work, mobilisation of resource is required. Communications strategies are often needed, given that some Complex Abuse matters are potentially high profile.

- 2.2 In Rotherham, there is currently one large scale Complex Abuse Inquiry ongoing. This inquiry commenced during January 2017, RMBC and partner agencies commenced a process in line with the Rotherham Local Safeguarding Children Board Complex Abuse Procedure. Following the early Strategic and Operational Meetings, a bespoke Social Work Team was established, with connected Health, Police and Early Help colleagues. The team have worked to further understand the nature and extent of abuse involved.



- 2.3 During the recent OFSTED inspection, the quality and impact of this work was noted. Inspectors were impressed with the “forensic” and “tenacious” approach in place, specifically identifying the quality of assessments and the impact that Social Workers were having in very challenging circumstances. The leadership of the work was equally identified and commented on in a positive way, the inspectorate noting that an “impressive forward thinking” approach had been adopted and implemented. The whole process was identified as reflective of outstanding practice.
- 2.4 Our organisational learning arising from this current inquiry has been significant, a learning review has been undertaken in parallel to the operational work in children’s cases, setting out specific developments in practice that go beyond the work on the these particular cases.
- 2.5 Our learning relates to the way we work with vulnerable children who move between local authority areas and across international borders, in particular specific procedures have been implemented around the sharing of information between agencies in different countries. Processes in relation to the identification of missing families have been developed (in order to address the issues about risk of flight during child protection processes), and our skills and expertise in mapping large amounts of familial information to aid assessment has increased significantly. More generally, the learning from this work is helping to strengthen social work assessments, in the context of accumulative information giving rise to concerns about children’s safety.

### **3. Key Issues**

- 3.1 The key issues are set out in the body of the report (above).

### **4. Options considered and recommended proposal**

- 4.1 No options are proposed, the report is to provide information.

### **5. Consultation**

- 5.1 As above.

### **6. Timetable and Accountability for Implementing this Decision**

- 6.1 No decision is required.

### **7. Financial and Procurement Implications**

- 7.1 As above.

### **8. Legal Implications**

- 8.1 As above.

## **9. Human Resources Implications**

9.1 As above.

## **10. Implications for Children and Young People and Vulnerable Adults**

10.1 There continues to be an ongoing Complex Abuse Inquiry which has identified a significant number of children suffering or at risk of suffering significant harm. This work is likely to form a longer term part of Rotherham's safeguarding landscape and so the work of the Complex Abuse Strategic Group and broader Children and Young People Directorate are now considering how this is embedded into usual business in the longer term.

## **11. Equalities and Human Rights Implications**

11.1 The equalities and human rights implications are considered throughout case work with individual children and young people as is the case for all other safeguarding interventions.

## **12. Implications for Partners and Other Directorates**

12.1 Complex Abuse inquiries are embedded in a multi-agency process with all key partners engaged. This process is carried out on behalf of the Local Safeguarding Children Board in line with the multi-agency procedure.

## **13. Risks and Mitigation**

13.1 No decisions are sought in line with this report.

## **14. Accountable Officer(s)**

Vicky Schofield, Head of First Response

This report is published on the Council's website or can be found at:-  
<http://moderngov.rotherham.gov.uk/ieDocHome.aspx?Categories=>